

Park Home **VAKE**

ANAGI

DEVELOPMENT

RESIDENTIAL COMPLEX

Park Home **WAKE**

Park Home **VAKE**



ANAGI DEVELOPMENT IS THE NEW DIRECTION OF ANAGI, THE LARGEST CONSTRUCTION COMPANY IN GEORGIA WITH A 30-YEAR HISTORY.

Park Home IS ANAGI DEVELOPMENT'S FIRST PREMIUM CLASS RESIDENTIAL COMPLEX WITH THE LARGEST 8000 m² RECREATIONAL AREA IN VAKE.

IN ADDITION, A 2-HECTARE PARK WILL BE SET UP IN THE CITY-OWNED RECREATIONAL AREA IN FRONT OF *Park Home* AND ANAGI DEVELOPMENT WILL BE ACTIVELY INVOLVED IN ITS DEVELOPMENT.



Park Home IS LOCATED 200 METERS FROM I.CHAVCHAVADZE AVENUE, ON THE NEW HIGHWAY, ON THE TERRITORY ADJACENT TO THE VAKE POLICE DEPARTMENT AND TENNIS COURTS.





Park

VAKE
Park Home

New Highway

Chabua

Amirejibi Highway

River Vere

Nino Ramishvili Dead End

Vake Police Department

Tennis courts

Mziuri Park

#9 Hospital

DAUG

Ilia Chavchavadze Avenue

Embassy of the Czech Republic

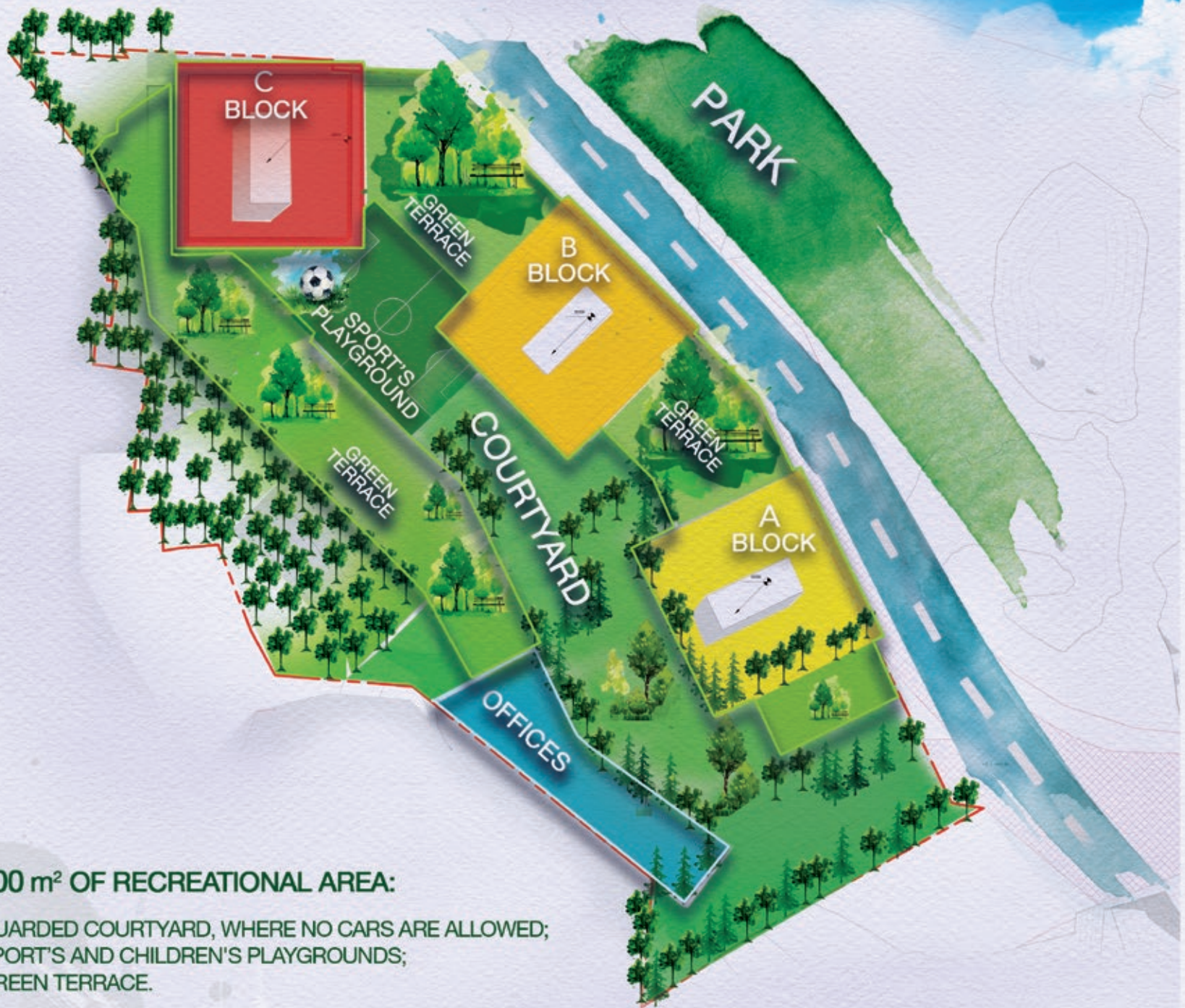
Embassy of Turkey

S. Khochimashvili University Hospital

AMENITIES OF THE COMPLEX:

- GREEN TERRACE;
- GUARDED COURTYARD;
- SPORT'S AND CHILDREN'S PLAYGROUNDS;
- 25-METER SWIMMING POOL;
- FITNESS ROOM;
- LOBBY WITH CONCIERGE SERVICES;
- PARKING.

RECREATIONAL AREA



8000 m² OF RECREATIONAL AREA:

- GUARDED COURTYARD, WHERE NO CARS ARE ALLOWED;
- SPORT'S AND CHILDREN'S PLAYGROUNDS;
- GREEN TERRACE.

Park Home **WAKE**
GREEN TERRACE



Park Home **VAKE**

GUARDED COURTYARD



Park Home **VAKE**

SPORT'S AND CHILDREN'S PLAYGROUNDS



Park Home **VAKE**

25-METER SWIMMING POOL



Park Home **VAKE**

FITNESS ROOM



Park Home **VAKE**

LOBBY WITH CONCIERGE SERVICES



APARTMENTS IN *Park Home* WILL BE DELIVERED IN COMFORT STANDARD + CONDITION. THIS IS THE BRAND NEW STANDARD FROM ANAGI DEVELOPMENT. COMFORT STANDARD + IMPLIES A CONDITION BROUGHT TO COSMETIC REPAIRS WITH THE ELEMENTS OF SMART HOME.

SMART HOME ELEMENTS:

- SMOKE DETECTOR;
- WATER-LEAK DETECTOR;
- HEATING CONTROL SYSTEM;
- AIR CONDITIONING CONTROL SYSTEM;
- DOOR OPENING DETECTOR.

COMFORT STANDARD +

- THE ENTIRE COMPLEX AS WELL AS THE SEPERATE APARTMENTS ARE EQUIPPED WITH A MODERN FIRE SAFETY SYSTEM;
- ENERGY-EFFICIENT STAINED GLASS WINDOWS WITH PROFILES OF THE GERMAN COMPANY SCHUCO AND WITH LOW-EMISSION GLASSES PRODUCED BY GUARDIAN GLASS (USA);
- THE WALLS OF THE APARTMENT AND STRETCHED FLOOR WITH SOUND AND HEAT INSULATION;
- THE VENTILATED AND ENERGY-EFFICIENT FACADE IS INSULATED WITH BASALT COTTON WOOL ROCKWOOL AND IS FACED WITH NATURAL CERAMIC TILES OF EUROPEAN MANUFACTURE;
- THE COLLECTIVE INDIVIDUAL HEATING SYSTEM OF ITALIAN MANUFACTURE, INCLUDING CENTRAL CHIMNEY, SECTIONAL ALUMINIUM RADIATORS, CONDENSATION BOILER AND PIPES;
- JAPANESE MANUFACTURING CONDITIONING SPLIT SYSTEM WITH EXTERNAL AND INTERNAL UNITS;
- ELEVATORS PRODUCED BY JAPANESE PRODUCER – MITSUBISHI;
- PLUMBING EQUIPMENT IS BROUGHT TO THE POINT OF CONSUMPTION BY UNINTERRUPTED PIPES AND WITH ITALIAN INSULATION MATERIALS;
- ELECTRIC WIRE INSERTED INTO THE GAUFFERED PIPE AND WEAK WIRE, INTERNET, TELEVISION, TELEPHONE OF EUROPEAN PRODUCTION IS BROUGHT TO THE POINT OF CONSUMPTION.

Park Home **VAKE**

KITCHEN



Park Home **VAKE**

LIVING ROOM



Park Home **VAKE**

BEDROOM



Park Home **VAKE**
KIDS ROOM



Park Home **VAKE**

BEDROOM



Park Home **VAKE**
BATHROOM



FLOOR PLAN

TOTAL SPACE 124.6 m²
RESIDENTIAL SPACE 106.3 m²
BALCONY 18.3 m²



TOTAL SPACE 109.3 m²
RESIDENTIAL SPACE 99.1 m²
BALCONY 10.2 m²

TOTAL SPACE 64.6 m²
RESIDENTIAL SPACE 59.5 m²
BALCONY 5.1 m²

TOTAL SPACE 66.1 m²
RESIDENTIAL SPACE 61.0 m²
BALCONY 5.1 m²

TOTAL SPACE 64.6 m²
RESIDENTIAL SPACE 59.5 m²
BALCONY 5.1 m²

TOTAL SPACE 64.6 m²
RESIDENTIAL SPACE 59.5 m²
BALCONY 5.1 m²

TOTAL SPACE 93.2 m²
RESIDENTIAL SPACE 80.0 m²
BALCONY 13.2 m²

TOTAL SPACE 94.1 m²
RESIDENTIAL SPACE 75.8 m²
BALCONY 18.3 m²

TOTAL SPACE 49.1 m²
RESIDENTIAL SPACE 44.0 m²
BALCONY 5.1 m²





APARTMENT LAYOUTS

TOTAL SPACE: 49.1 m²



- 1. HALL: 5 m²
- 2. LIVING ROOM & KITCHEN: 19.4 m²
- 3. BEDROOM: 13.6 m²
- 4. WC: 4.5 m²
- 5. BALCONY: 5.1 m²

TOTAL SPACE: 64.6 m²



- 1.HALL: 6.5 m²
- 2.LIVING ROOM & KITCHEN: 24.6 m²
- 3.BEDROOM: 18.6 m²
- 4.WC: 3.9 m²
- 5.WALKING CLOSET: 2.7 m²
- 6.BALCONY: 5.1 m²

TOTAL SPACE: 74.9 m²



- 1.HALL: 8.4 m²
- 2.LIVING ROOM & KITCHEN: 21.1 m²
- 3.BEDROOM: 12.0 m²
- 4.BEDROOM: 17.6 m²
- 5.WC: 5.9 m²
- 6.BALCONY: 5.1 m²

TOTAL SPACE: 92.8 m²



- 1.HALL: 7.8 m²
- 2.LIVING ROOM & KITCHEN: 28.9 m²
- 3.BEDROOM: 21.4 m²
- 4.BEDROOM: 21.9 m²
- 5.WC: 4.4 m²
- 6.BALCONY: 5.1 m²

TOTAL SPACE: 93.8 m²



- 1.HALL: 11.0 m²
- 2.LIVING ROOM & KITCHEN: 25.9 m²
- 3.BEDROOM: 15.9 m²
- 4.BEDROOM: 12.6 m²
- 5.WC: 6.4 m²
- 6.BALCONY: 5.1 m²
- 7.BALCONY: 8.1 m²
- 8.BALCONY: 5.1 m²

TOTAL SPACE: 97.6 m²



- 1.HALL: 13.3 m²
- 2.LIVING ROOM & KITCHEN: 27.2 m²
- 3.BEDROOM: 21.2 m²
- 4.BEDROOM: 16.9 m²
- 5.WC: 6.3 m²
- 6.WC: 4.4 m²
- 7.BALCONY: 5.1 m²

TOTAL SPACE: 97.8 m²



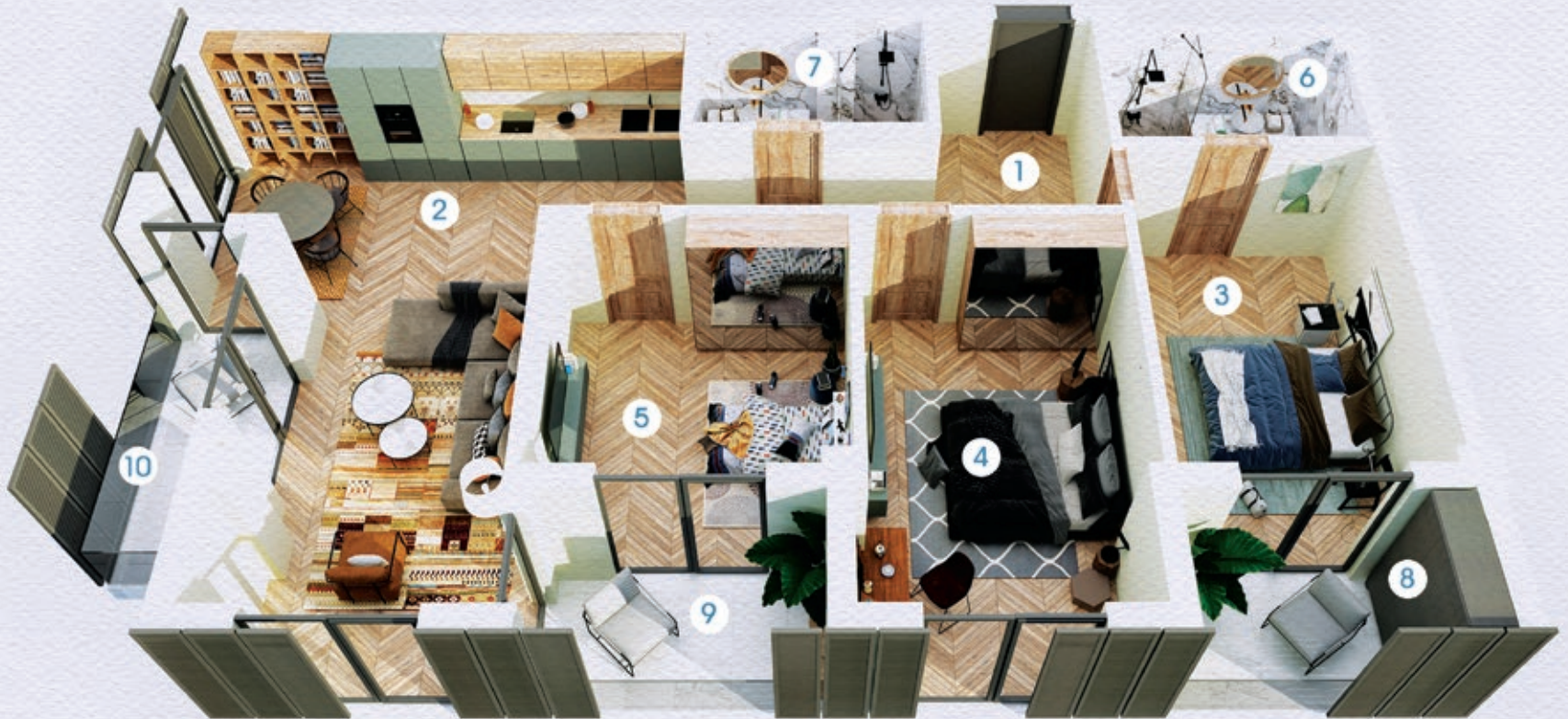
- 1.HALL: 9.4 m²
- 2.LIVING ROOM & KITCHEN: 27.8 m²
- 3.BEDROOM: 18.8 m²
- 4.BEDROOM: 17.3 m²
- 5.WC: 4.6 m²
- 6.WC: 2.7 m²
- 7.BALCONY: 8.1 m²
- 8.BALCONY: 5.1 m²

TOTAL SPACE: 109.3 m²



- 1.HALL: 13.9 m²
- 2.LIVING ROOM & KITCHEN: 27.2 m²
- 3.BEDROOM: 15.2 m²
- 4.BEDROOM: 16.6 m²
- 5.BEDROOM: 11.6 m²
- 6.WC: 5.4 m²
- 7.WC: 4.4 m²
- 8.BALCONY: 5.1 m²
- 9.BALCONY: 5.6 m²

TOTAL SPACE: 120 m²



- 1.HALL: 11.0 m²
- 2.LIVING ROOM & KITCHEN: 36.0 m²
- 3.BEDROOM: 14.4 m²
- 4.BEDROOM: 16.0 m²
- 5.BEDROOM: 12.4 m²
- 6.WC: 5.4 m²
- 7.WC: 4.9 m²
- 8.BALCONY: 5.1 m²
- 9.BALCONY: 5.1 m²
- 10.BALCONY: 5.1 m²

TOTAL SPACE: 124.3 m²



- 1.HALL: 10.0 m²
- 2.LIVING ROOM & KITCHEN: 27.8 m²
- 3.BEDROOM: 20.3 m²
- 4.BEDROOM: 17.5 m²
- 5.BEDROOM: 15.3 m²
- 6.WC: 6.1 m²
- 7.WC: 4.7 m²
- 8.BALCONY: 8.1 m²
- 9.BALCONY: 5.1 m²
- 10.BALCONY: 5.1 m²

TOTAL SPACE: 125.5 m²



1.HALL: 7.1 m²
2.LIVING ROOM & KITCHEN: 38.0 m²
3.BEDROOM: 15.9 m²
4.BEDROOM: 13.6 m²
5.BEDROOM: 19.6 m²

6.WC: 5.2 m²
7.WC: 3.6 m²
8.BALCONY: 5.1 m²
9.BALCONY: 8.1 m²
10.BALCONY: 5.1 m²

TOTAL SPACE: 189.85 m²



1.HALL: 14.5 m²
2.LIVING ROOM: 42.5 m²
3.KITCHEN: 15.3 m²
4.BEDROOM: 18.4 m²
5.BEDROOM: 21.8 m²
6.BEDROOM: 20.3 m²

7.WC: 5.8 m²
8.WC: 4.9 m²
9.WC: 5.0 m²
10.BALCONY: 5.1 m²
11.TERRACE: 25.1 m²
12.BALCONY: 5.1 m²

TOTAL SPACE: 191.15 m²



1.HALL: 16.7 m²
2.LIVING ROOM: 42.7 m²
3.KITCHEN: 15.4 m²
4.BEDROOM: 19.1 m²
5.BEDROOM: 21.2 m²
6.BEDROOM: 20.4 m²

7.WC: 5.8 m²
8.WC: 4.9 m²
9.WC: 3.4 m²
10.BALCONY: 5.1 m²
11.TERRACE: 25.1 m²
12.BALCONY: 5.1 m²

TOTAL SPACE: 194.47 m²



1.HALL: 20.5 m²
2.LIVING ROOM: 44.3 m²
3.KITCHEN: 14.9 m²
4.BEDROOM: 24.1 m²
5.BEDROOM: 13.7 m²
6.BEDROOM: 18.4 m²

7.WC: 4.8 m²
8.WC: 4.4 m²
9.WC: 6.6 m²
10.BALCONY: 5.1 m²
11.TERRACE: 25.0 m²
12.BALCONY: 5.1 m²

TOTAL SPACE: 195.4 m²



1.HALL: 20.5 m²
2.LIVING ROOM: 44.1 m²
3.KITCHEN: 14.9 m²
4.BEDROOM: 24.1 m²
5.BEDROOM: 13.8 m²
6.BEDROOM: 18.5 m²

7.WC: 6.0 m²
8.WC: 4.5 m²
9.WC: 6.6 m²
10.BALCONY: 5.1 m²
11.TERRACE: 25.0 m²
12.BALCONY: 5.1 m²

SALES OFFICE:
MERAB KOSTAVA STR. 37/39, TBILISI, GEORGIA

+(99532) 2 318 318

+(995) 577 318 318

+(995) 555 318 310

sales@ad.ge

www.ad.ge

Park Home

THE CONSTRUCTION WORK IS BEING CARRIED OUT BY ANAGI, THE LARGEST CONSTRUCTION COMPANY WITH A 30-YEAR HISTORY OF CONSTRUCTION WORK.



THE FIRST COMPANY IN GEORGIA TO BE AWARDED
ISO 45001:2018 & ISO 9001:2015 CERTIFICATIONS.



Park Home **WAKE**